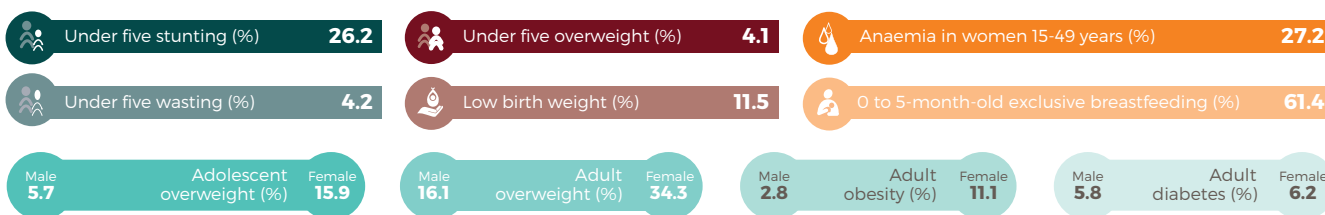


# Kenya



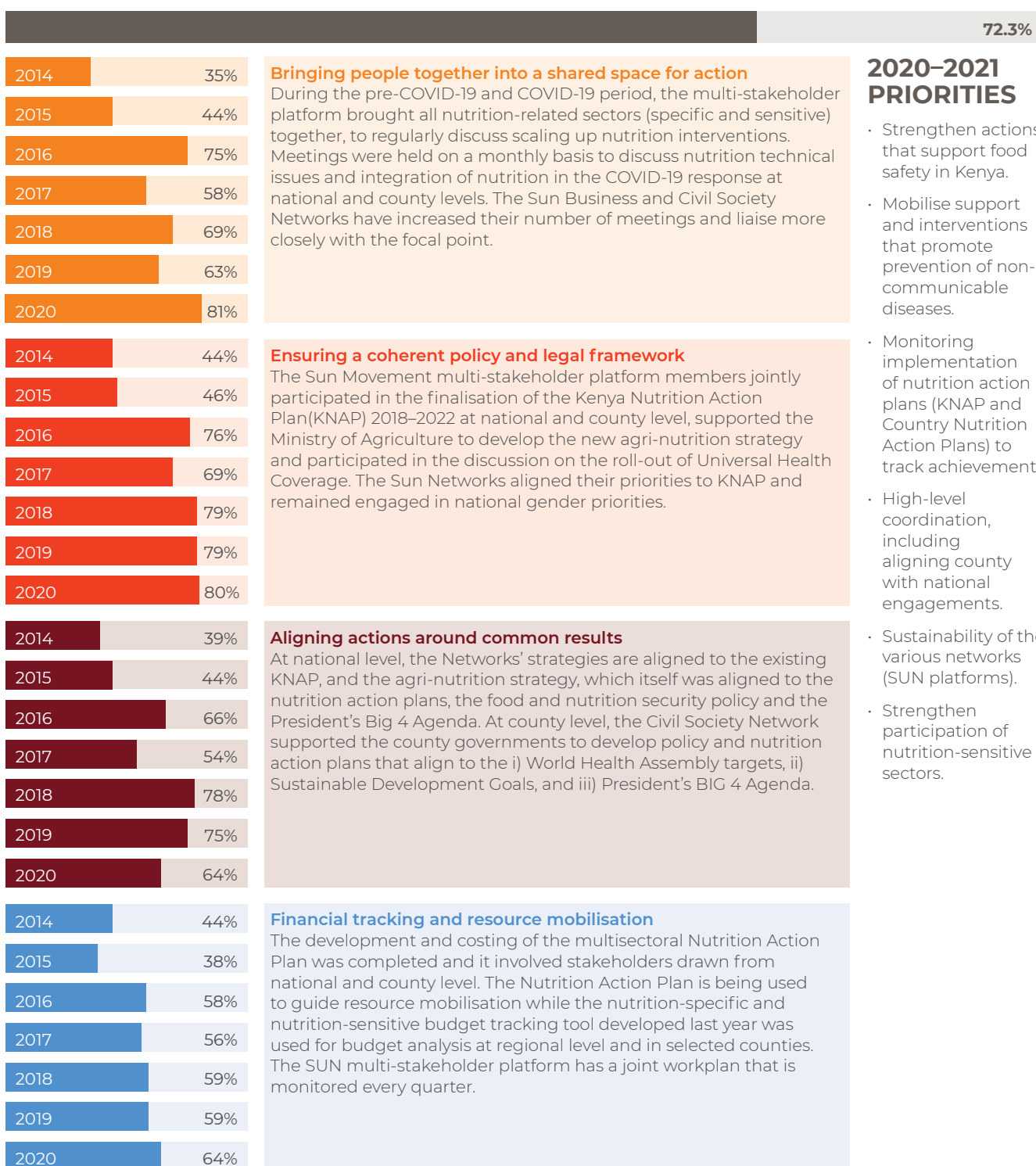
**Joined:** August 2012  
**Population:** 53.77 million  
[SCALINGUPNUTRITION.ORG/KENYA](http://SCALINGUPNUTRITION.ORG/KENYA)



## COVID-19 SNAPSHOT

The effect of the pandemic on livelihoods and social well-being has been very severe. Due to the effects of the lockdown measures, the government has been obliged to introduce exceptions for cargo flights and trucks transporting goods.

## INSTITUTIONAL TRANSFORMATIONS 2019–2020



## 2020–2021 PRIORITIES

- Strengthen actions that support food safety in Kenya.
- Mobilise support and interventions that promote prevention of non-communicable diseases.
- Monitoring implementation of nutrition action plans (KNAP and Country Nutrition Action Plans) to track achievement.
- High-level coordination, including aligning county with national engagements.
- Sustainability of the various networks (SUN platforms).
- Strengthen participation of nutrition-sensitive sectors.