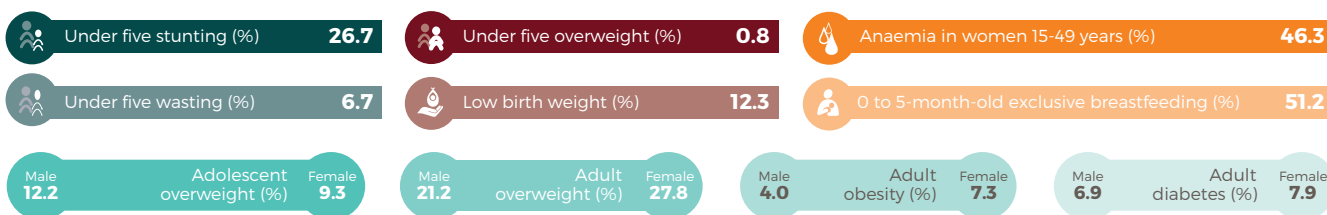


# Myanmar



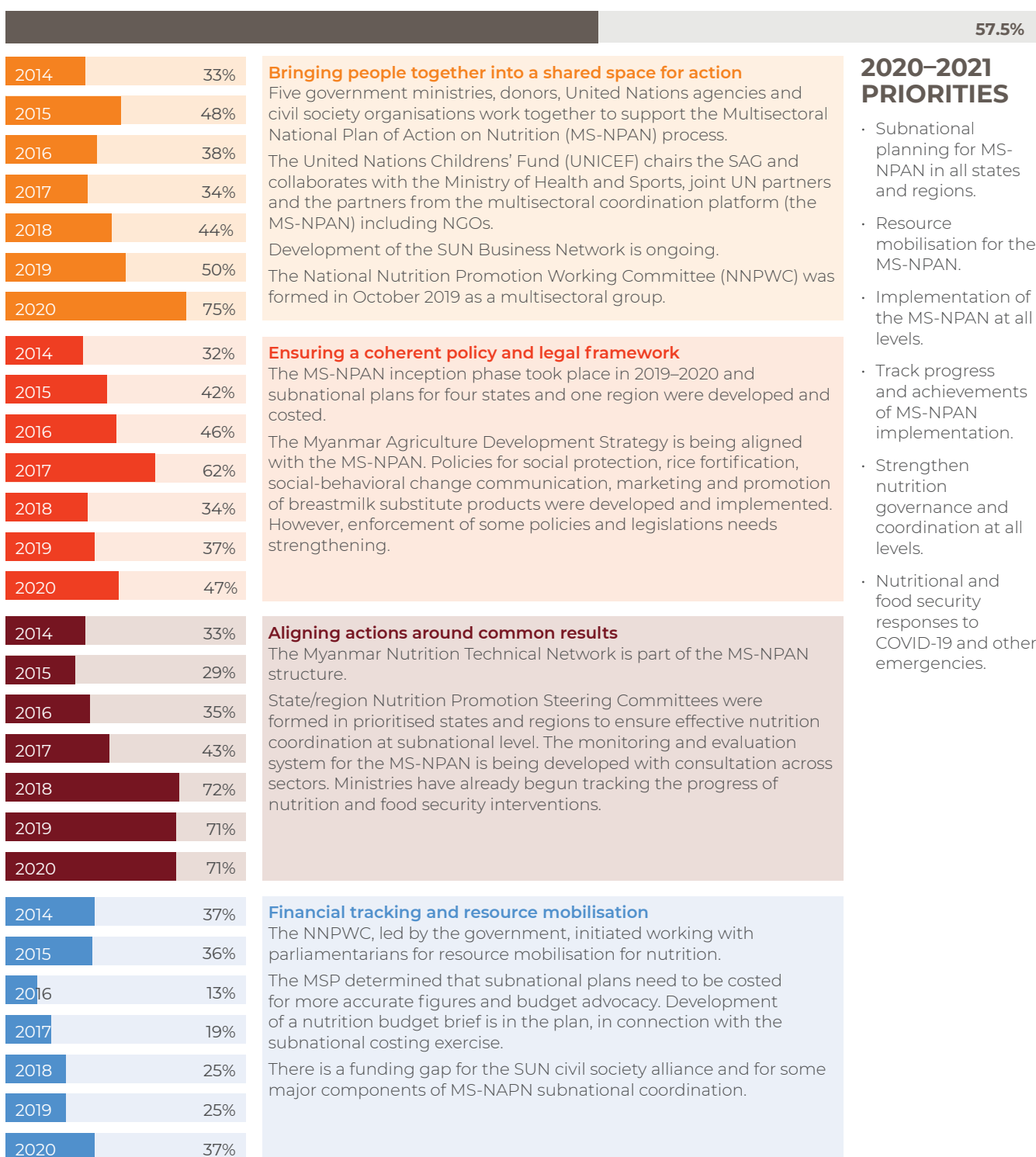
**Joined:** April 2013  
**Population:** 54.41 million  
[SCALINGUPNUTRITION.ORG/MYANMAR](http://SCALINGUPNUTRITION.ORG/MYANMAR)



## COVID-19 SNAPSHOT

In March 2020, the Nutrition Strategic Advisory Group (SAG) of the Nutrition in Emergencies Working Group was endorsed as the nutrition COVID-19 response taskforce. The SAG developed a nutrition COVID-19 response plan which aims to ensure continuity of essential nutrition interventions.

## INSTITUTIONAL TRANSFORMATIONS 2019–2020



## 2020–2021 PRIORITIES

- Subnational planning for MS-NPAN in all states and regions.
- Resource mobilisation for the MS-NPAN.
- Implementation of the MS-NPAN at all levels.
- Track progress and achievements of MS-NPAN implementation.
- Strengthen nutrition governance and coordination at all levels.
- Nutritional and food security responses to COVID-19 and other emergencies.