

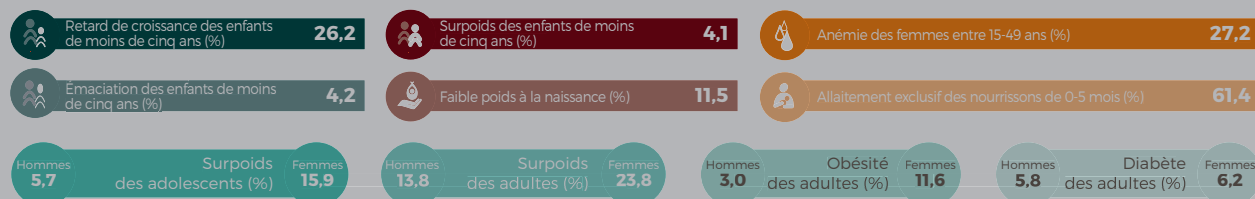
Guinée-Bissau



Date d'adhésion : mars 2014

Population : 52,57 millions

SCALINGUPNUTRITION.ORG/GUINEA-BISSAU



APERÇU COVID-19

The NNC has issued a guide for local Nutrition Cluster actions, including recommendations concerning breast-milk substitutes, guidance on nutrient-dense and fortified foods in food packs, and how to focus on most vulnerable. The Secretary of Agriculture is championing healthier, plant-based diets.

TRANSFORMATIONS INSTITUTIONNELLES EN 2019-2020

